

# Adventurous

## April

### U3A DEEPDENE VACATION PROGRAM

Coordinated by Anne Kemp



<p><b>MONDAY</b> April 13</p> <p><b>AA 01</b> <b>Travel Zoom</b> Host Pam O'Brien 10.00am</p>	<p><b>TUESDAY</b> April 14</p> <p><b>AA 02</b> <b>Day Cruise to Williamstown</b> Meet Anne Kemp at 10.00am</p> <p><b>AA 03</b> <b>Lunch @ Steam Packet Hotel</b></p>	<p><b>WEDNESDAY</b> April 15</p> <p><b>AA 04</b> <b>Coffee &amp; Chat Jolly Miller Café</b> Meet Anne Kemp at 10.00am</p>	<p><b>THURSDAY</b> April 16</p> <p><b>AA 05</b> <b>Ian Potter Centre</b> Meet Lois Heycox at 10.30am</p> <p><b>AA 06</b> <b>Lunch @ Time Out in Fed Square</b></p>	<p><b>FRIDAY</b> April 17</p> <p><b>AA 07</b> <b>Abbotsford Convent</b> Meet Anne Kemp at 10.15am</p> <p><b>AA 08</b> <b>Lunch @ Cams Kiosk</b></p>
<p><b>MONDAY</b> April 20</p> <p><b>AA 09</b> <b>Travel Zoom</b> Host Pam O'Brien 10.00am</p>	<p><b>TUESDAY</b> April 21</p> <p><b>AA 10</b> <b>Picnic – Alexandra Gardens</b> Meet Elizabeth ETTY-Leal 12 noon</p>	<p><b>WEDNESDAY</b> April 22</p> <p><b>AA 11</b> <b>Heritage Tour Melbourne Town Hall</b> Meet Anne Kemp 10.45am</p> <p><b>AA 12</b> <b>Lunch @ Parliament House Stranger's Corridor</b> Meet Anne Kemp 12.15pm</p>	<p><b>THURSDAY</b> April 23</p> <p><b>AA 13</b> <b>Trentham Day Trip</b> Meet Matthew ETTY-Leal @ Southern Cross Station 9.45am</p> <p><b>AA 14</b> <b>Coffee &amp; Chat Stranger's Coffee House</b> Meet Sandie Beswarick at 10.00am</p>	<p><b>FRIDAY</b> April 24</p> <p><b>AA 15</b> <b>Lunch @ Box Hill Golf Course</b> Meet Anne Kemp at 12.30pm</p>



**DEEPDENE**  
UNIVERSITY OF THE THIRD AGE

# Adventurous April

## U3A DEEPEDENE VACATION PROGRAM

### Week 1 : April 13 – April 17

#### AA 01 Travel talk on Zoom

Hosted by Pam O'Brien

Presented by John Manton

#### The land of the midnight sun – Oslo to Tromsø and Bergen

In June 2025 John and Noela Manton spent two and a half weeks in Norway. This presentation includes the historic cities of Trondheim and Bergen, Oslo the capital city, and the arctic and sub-arctic towns of Bodø and Tromsø. Norway is a land of spectacular land and seascapes.

Features of the trip were travelling on the railway from Oslo to Trondheim and on to Bodø, referred to in TV travel programs as one of the world's most scenic railways, as is the branch line to Flam. We took the coastal cruise along Norway's fjord coast from Tromsø to Bergen, then on a local ferry to Flam, and the Flam branch line to Myrdal, where we joined the main line back to Oslo, to return to Australia.



Monday April 13

10.00 - 11.30am

Via Zoom

Places: 100

#### AA 02 Day Cruise to Williamstown

Leader: Anne Kemp M: 0413 940 705

Let's enjoy an hour's cruise to Williamstown, where we are booked to enjoy lunch at the *Steam Packet Hotel* (own expense) with an hour or two afterwards to explore Williamstown with its amazing history, waterfront, lovely shops and outstanding galleries and gardens

Bring your name tag with emergency contacts completed and your Seniors card.



Tuesday April 14

Meet **10am Southbank promenade Berth 2**

Cruise leaves at 10.30am

Returning cruise leaving from Gem Pier at **1.45pm OR 4pm**

**Cost: \$42 return (to secure your place, payment on enrolment is needed)**

Places: 20

### AA 03 Lunch “*Steam Packet Hotel*”

A short ten-minute walk from the Williamstown pier

Leader: Anne Kemp

Established in 1863, Steam Packet Hotel offers a truly unique and charming experience to its patrons.

Located right in the heart of Williamstown, this historical landmark's smartly preserved tavern ambience creates the perfect space to unwind and soak in the history of yesteryear."



Tuesday April 14

12 noon

Places: 20

Order and pay at your discretion

### AA 04 Coffee & Chat – “*Jolly Miller Café*”

315 Doncaster Rd. Balwyn North

Leader: Anne Kemp

Wednesday April 15

10am

Places: 20

Please bring your name tag with Emergency contacts completed.



Please order and pay on arrival

### AA 05 Ian Potter Centre – free exhibitions

Federation Square

Leader: Lois Heycox

Exhibition 1: Ground Floor

***Bark Salon*** showcases the breadth of bark painting as a genre, tracing genealogical shifts in form, aesthetic, narrative and politic. The exhibition features works ranging from the NGV’s earliest acquisitions, which showcase figurative, totemic, and Ancestral narratives, through to contemporary works by some of Australia’s most renowned painters.



Exhibition 2: Level 3

***Made to move*** presents from the NGV’s holdings of Australian jewellery spanning 1960 to 2020. The presentation celebrates art, craft and design practitioners whose deep material knowledge informs the creation of pieces made for the body in motion. Featuring materials such as metal, stone, glass, clay and shell, ***Made to move*** highlights enduring traditions of adornment, including those of First Peoples and generations of Australian makers.

Please bring your name tag with Emergency contacts completed.

Thursday April 16

10.00am

Places: 20

E-mail: [u3adeepdeneinc@gmail.com](mailto:u3adeepdeneinc@gmail.com)

Website: [www.u3adeepdene.org.au](http://www.u3adeepdene.org.au)

### **AA 06 Lunch “Time Out”**

Lunch @ “Time Out” – Federation Square

Lunch is at your own discretion, order and pay on arrival.

Thursday April 16

12.30pm

Places: 20

### **AA 07 Guided tour of Abbotsford Convent**

1 St Heliers St. Abbotsford

Leader: Anne Kemp

Renowned for its rich history, its striking built and natural landscapes, and the remarkable community-led campaign to preserve it from commercial development, the site was enshrined on Australia’s National Heritage List in 2017. Today, this nationally and internationally unique precinct is managed by the Abbotsford Convent Foundation, a not-for-profit, social enterprise.



Friday April 17

10.15am

**Cost: \$15 (to secure your place, payment on enrolment is needed)**

Places: 20

### **AA 08 Lunch – Cams Kiosk**

After Abbotsford Convent tour

Leader: Anne Kemp

Friday April 17

After Convent tour

Places: 12

order and pay at your discretion

Other lunch options at Abbotsford Convent are:

Kapaya (Japanese soul ) and Convent Bakery

Please bring your name tag with Emergency contacts completed.

# Adventurous April

## U3A DEEPDENE VACATION PROGRAM

Week 2: April 20 – April 24

### AA 09 Travel talk on Zoom

Hosted by Pam O'Brien

Presented by Trish Lele

#### The Mississippi Delta by Greyhound bus

In December 2001, Trish Lele and her husband took the Greyhound bus down the Mississippi Delta between Memphis and New Orleans.

It was a fascinating and deeply moving experience.

The interconnected stories of the Delta - slavery, plantations, the Civil War, Blues music, the Civil Rights movement - affected them deeply.

But it was the dignity and stoic acceptance of the people they met along the way - in the main, desperately poor people - that left the greatest impression.

Trish and Imre have taken many trips and travelled the world, but that bus trip down the Mississippi Delta is still one of the highlights.

Monday April 20

10.00 – 11.30am

Via Zoom

Places: 100



### AA 10 Autumnal Picnic with Elizabeth – meet at the rotunda

70 Cotham Rd., Kew

Leader: Elizabeth Ety-Leal

A fine example of a Federation landscape, the gardens feature expansive lawn areas surrounded by beautiful avenues of mature trees creating shady glades and pools of dappled sunlight.

Deep foliage and shrub borders surrounding the gardens offer brilliant splashes of seasonal colour. These magnificent gardens have a perennial border as a backdrop and a decorative rotunda overlooking the lily pond.

**Parking:** on Cotham Road and in Gellibrand Street.

Please bring your name tag with emergency contacts completed, a picnic and a chair if you require

Tuesday April 21

12 noon – 2.00pm

Places: 8



### **AA 11 Heritage Tour of Melbourne Town Hall**

Leader: Anne Kemp

Meet at **10.45am** outside flower stall in front of Town Hall

Please note your bag will be scanned-(similar to the airport)

Please bring your name tag, with emergency contacts completed.

After the tour you may choose to participate in the lunch – see below



Wednesday April 22

10.45am

Places: 10

### **AA 12 Lunch@ Parliament House in Stranger's Corridor**

Leader: Anne Kemp

Enjoy lunch in the restaurant on level one at Parliament. Elegant, with dark timbers, contemporary artworks and accents of gold, red and pink tones shape an ambient sense of taste.

The best local Victorian food and beverage offering ensures all guests experience a taste of Victoria.

They aim to use locally grown and produced Victorian foods wherever possible to offer the best quality seasonal menus.

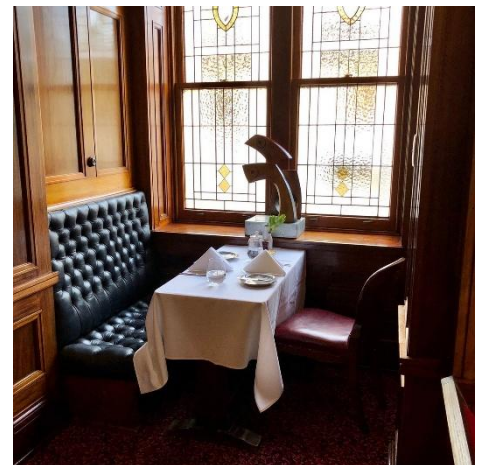
You may choose to come just to lunch, not participate in the tour listed above.

Please note your bag will be scanned-(similar to the airport)

Please bring your name tag, with emergency contacts completed.

\$57.50 for two courses – Main and dessert.

Drinks and any additions at own expense.



Wednesday April 22

12.15pm

**Cost: \$57.50 (to secure your place, payment on enrolment is needed)**

Places: 16

### **AA 13 Trentham Day Trip**

Leader: Matthew Etty-Leal

***Please note as this January trip was cancelled due to fires, the original participants have first option to attend. A waitlist of interested persons is welcome***

Meet 9.45am at Southern Cross station, usual spot on the ground floor, near the clock, & the escalators.  
Train to Woodend (Bendigo Line) leaves at 10.06am, arriving at 11.05am  
From there, a bus to Trentham arriving at 11.37,  
walk to Trentham Hotel for midday lunch (own expense).  
Following lunch, meet Phil Davis at Trentham Rail Station for an interesting presentation on the history of the station.

After the presentation some options are: a coffee and/or Sisko chocolates, perhaps a walk around the beautiful historic township.  
Together we catch the 3.38 bus to Woodend, then the 4.08 train back to Southern Cross, arriving at 5.30pm.  
lunch at own expense/myki card for transport  
Please bring your name tag with emergency contacts completed.



Thursday April 23

9.45am Southern Cross Station

**Cost: \$5 cash donation on the day** to Trentham Rail and Tramways Association.

Places: 15

#### **AA 14 Coffee & Chat - "Stranger's Coffee House"**

208 Whitehorse Rd. Balwyn

Leader: Sandie Beswarick

Thursday April 23

10.00am.

Places: 20

Please bring your name tag with Emergency contacts completed.



Please order and pay on arrival

#### **AA 15 Lunch @ Box Hill Golf Course**

202 Station Street, Box Hill

Leader: Anne Kemp

Join us for our final event of the *Adventurous April* program, a relaxed lunch overlooking the greens

Friday April 24

12.30pm

Places: 20

Order and pay at your discretion



Please bring your name tag with Emergency contacts completed.

**Enrolment is essential** for each excursion, activity or zoom

These open on Thursday, **March 12** and should be made before **March 30**

**Payments should accompany enrolments as noted and are non refundable.**

**To enrol** go to our website:

[www.u3adeepdene.org.au](http://www.u3adeepdene.org.au) and click on the Member Access button



This will take you to MyU3A and you can enrol for **CLASSES 2026**

under the category **VACATION PROGRAM**

If you need help with this, phone Jenny Cash (0408 019 815)

### **Once the vacation starts:**

If you wish to cancel an enrolment:

\*\*\***withdraw** online

\*\*\*or by email to [deepdeneu3amembership@gmail.com](mailto:deepdeneu3amembership@gmail.com)

If you need help, phone Anne Kemp on 0413 940 705

## **U3A DEEPDENE APRIL VACATION PROGRAM**

**Created and coordinated by Anne Kemp**

### **LEADERS:**

Travel – Pam O’Brien with John Manton, Trish Lele

Picnic – Elizabeth ETTY-Leal

Trentham – Matthew ETTY-Leal

Lunches, Coffee & Chats – Sandie Beswarick, Anne Kemp

Ian Potter Centre – Lois Heycox

Other visits & tours arranged by Anne Kemp – Please help if you are asked!!

***Adventurous April*** graphics and production of this guide – Ilza Dulmanis